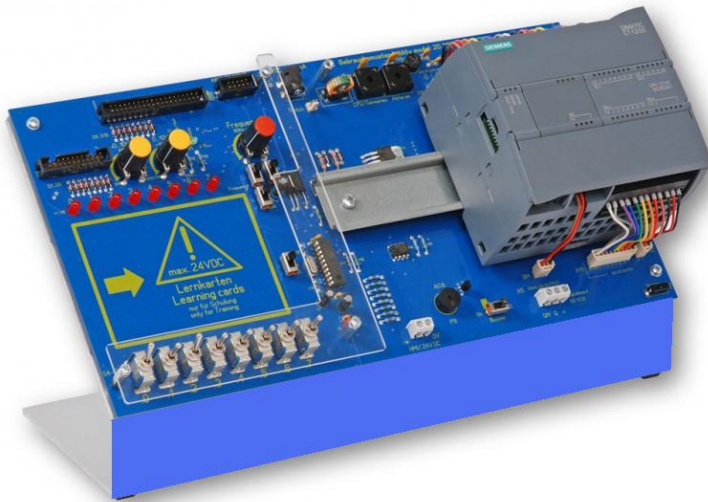


S7-1200 Training Kit

with learning cards and CD included



Description:

The training device is built on a stable aluminum angle. For signal input are integrated 8 toggle switches (on - off - momentary on) as well as two potentiometers for analog value input 0-10 V/DC 10 mA (e.g. simulation setpoint vs. actual temperature values). The signal input is indicated by eight LEDs (5 mm). Learning cards can be put on the board's field "Learning Cards" and used there. The included exercises are based on the principle "From easy to demanding" and are printed on 34 laminated learning cards. You can easily replace them on the board as required. You can store the

learning cards in the included transparent box. Furthermore it is possible to put Plug-On Modules - e.g. Motor, Traffic Lights, etc. (available as accessories) - on the 24-pin interface connector. The integrated 40-pin interface connector allows to connect simulation models via a ribbon cable (available as accessories) - max. 16 in-/outputs. With the slide switch "Infrared Receiver" one input is switched to IR receiving. This allows to realize 10 additional switching states with an IR remote control. The slide switch "Bero Simulation" turns on a frequency generator with an adjustable frequency from 60 Hz to 5 KHz. Also a "Horn" can be activated.

Technical Data:

Operating voltage: 24V DC / 850mA

2 Potentiometers for analog value input 0...10V DC / 10mA

1 Potentiometer for Sonar-Bero simulation (frequency generator up to 5 kHz)

1 IR receiver

8 Toggle switches for signal input

8 LED status indication - 5 mm, red

1 Slide switch Sonar-Bero simulation

1 Slide switch horn

1 Terminal 2-pin for SIMATIC-panel (only monocolour)

1 Terminal 3-pin for signal board analog output

1 Interface connector 24-pin

1 Interface connector 40-pin

1 Socket for expansion modules

1 Service socket (0V)

Dimensions (LxWxH): 330 x 170 x 125 mm

Weight: approx.1.7 kg

Scope of Supply:

1 S7-1200 Training Kit

1 Power supply international 230V AC/24V DC

1 IR remote control (without batteries)

34 Learning cards 110 x 81 mm laminated, in transparent storage box

1 CD with 34 practical exercises and solutions (English)

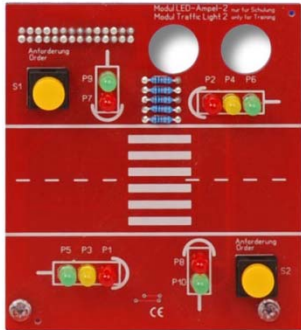
1 Quick guide for operation

Additional information

Toggle switches (on-off-mom. on) for dig. signal input	8
Digital outputs with status LED	8
Possible digital inputs	16
Possible digital outputs	12
Supply voltage	24 V DC
Input/output sockets 4 mm	no
Interface connector for simulation models	24-pin and 40-pin
D-sub socket	no
Variable power supplies	2 pc. (0 -10 V DC/10 mA)
Learning cards	34 pc., large (110 x 82 mm)
Attaching of Plug-On Modules	yes
IR receiver and remote control	yes
Frequency generator	60 Hz - 5 kHz

ACCESSORIES:

1) Traffic Light Model



The Plug-On Module "Traffic Light" can be plugged easily on the the interface connector (24-pin) of the S7-1200 training kit. Five required switching states (car and pedestrian) can be realized. Two pushbuttons for request of signal (pedestrian light) are integrated on the module.

Technical data:

Operating voltage 24V/DC

10x LED 5mm

2x Pushbuttons

Dimensions (LxWxH): 90 x 100 x 45 mm

Weight: ca. 0.1 kg

Scope of supply:

Plug-On Module "Traffic Light"

CD with 1 practical sample (English)

2) Motor Model



The Plug-On Module "Motor " can be plugged easily on the interface connector (24-pin) of the S7-1200 training kit. The speed of the assembled DC motor can initially be controlled by a potentiometer. By slide switch "PMW" the pulse-width modulation can be activated. Then the speed of the motor can be continuously controlled with the help of the SIMATIC S7-1200 from 0 to Max (e.g. controlled ramp). By switching a further switch on the Plug-On Module to "Ext." the DC motor can be continuously controlled by an external voltage from 0 to 10V/DC. The

perforated disc on the driving shaft passes through two fork light barriers. So a real detection of direction and speed is possible. The rotation is visually indicated by two integrated LEDs.

The following practical examples with solutions are available:

- Inching/continuous operation of a DC motor
- Rotation detection of a motor
- Reversing contactor circuit, switch over via Off
- Surface grinding machine
- Control of a reverse drive
- Rotation detection of a low-speed shaft
- Variable speed control with PWM

Technical Data:

Operating voltage 24V/DC

Max. revolutions per minute: 75

Dimensions (LxWxH): 90 x 100 x 45 mm

Weight: 0.1 kg

Scope of supply:

Plug-On Module "Motor "

CD with 7 practical samples (English)